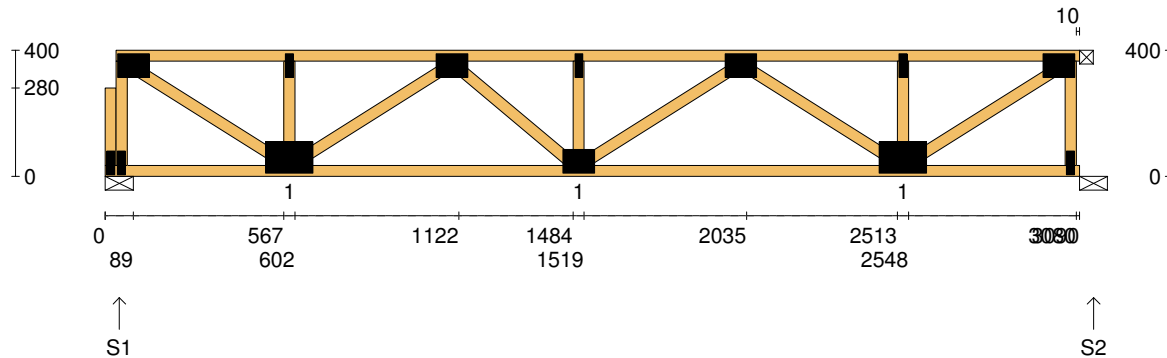


Client: D'ANDREA	Trusstech SA Pty Ltd 16 High St., Dry Creek, SA 5094 Joist Name: FJ1 Type: SJ 400 Joists: FJ18, FJ44	Job No: TT02363
Site: 50-52 WINDSOR ST MAGILL SA 5072 AUS		Weight: 19.28 kg
Ref: DWLG 4		Total Weight: 38.56 kg
		Laminations: 1



TIMBER / PLATES

Member	Size	Plating	Restraint
BC1	90x35-MGP10 H0 ADS	JD5	600
LBlock1	90x35-MGP10 H0 ADS	JD5	
LEW1	90x35-MGP10 H0 ADS	JD5	
TC1	90x35-MGP10 H0 ADS	JD5	300
W1	90x35-MGP10 H0 ADS	JD5	
W2	90x35-MGP10 H0 ADS	JD5	
W3	90x35-MGP10 H0 ADS	JD5	
W4	90x35-MGP10 H0 ADS	JD5	
W5	90x35-MGP10 H0 ADS	JD5	
W6	90x35-MGP10 H0 ADS	JD5	
W7	90x35-MGP10 H0 ADS	JD5	
W8	90x35-MGP10 H0 ADS	JD5	
W9	90x35-MGP10 H0 ADS	JD5	


- 1 more member was not shown -

Vertical Reactions at Supports

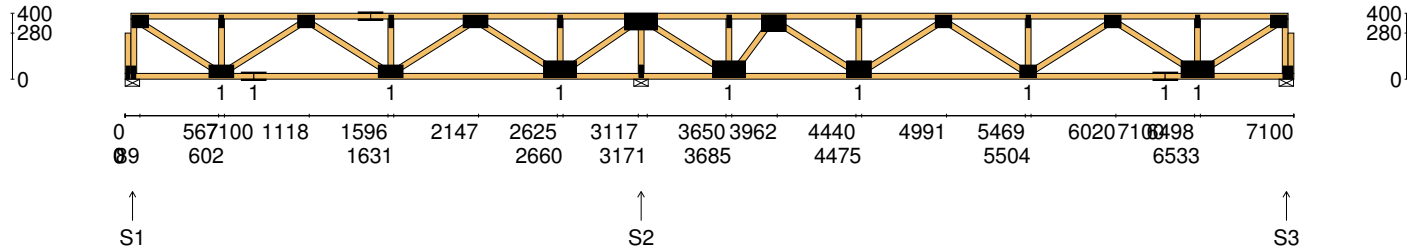
	S1	S2
1.35DL (kN)	0.51	0.50
1.2DL + 1.5LL (kN)	2.48	2.48

Joint Nail Plate

BL1-1	25x75-MN
T1	75x100-MN
BL1	25x75-MN
B1	100x150-MN
T2	25x75-MN
T3	75x100-MN
B2	75x100-MN
T4	25x75-MN
T5	75x100-MN
B3	100x150-MN
T6	25x75-MN
BR1	25x75-MN
T7	75x100-MN

Span: 3090	Floor Material: Particle (15.4 kg/m²)	Application: General Areas	All dimensions in millimetres. This drawing should be read in conjunction with Multinail Technical sheets. Wall plates must be placed at supports only.	016020 (TN-016-020)
Overhang: 0/0	Floor Covering: Std Carpet + Underlay (8 kg/m²)	Live Load: 1.5 kPa		Ver: Floor 1.9.4
Spacing: 600	Ceiling Material: Plaster 10mm Supa Span (8.2 kg/m²)	Point Load: 1.8 kN		Date: 14/02/2019
Quantity: 2	Ceiling Fixing: Metal direct @ 600c	Design: AS 1720.1-2010		Page: 1 of 23

Client: D'ANDREA	Trusstech SA Pty Ltd 16 High St., Dry Creek, SA 5094	Job No: TT02363
Site: 50-52 WINDSOR ST MAGILL SA 5072 AUS		Weight: 44.67 kg
Ref: DWLG 4	Joist Name: FJ2 Type: SJ 400 Joists: FJ19, FJ20, FJ21, FJ22	Total Weight: 178.69 kg
		Laminations: 1



TIMBER / PLATES

Member	Size	Plating	Restraint
BC1	90x35-MGP10 H0 ADS	JD5	600
LBlock1	90x35-MGP10 H0 ADS	JD5	
LEW1	90x35-MGP10 H0 ADS	JD5	
TC1	90x35-MGP10 H0 ADS	JD5	300
W1	90x35-MGP10 H0 ADS	JD5	
W2	90x35-MGP10 H0 ADS	JD5	
W3	90x35-MGP10 H0 ADS	JD5	
BC2	90x35-MGP10 H0 ADS	JD5	600
W4	90x35-MGP10 H0 ADS	JD5	
TC2	90x35-MGP10 H0 ADS	JD5	300
W5	90x35-MGP10 H0 ADS	JD5	
W6	90x35-MGP10 H0 ADS	JD5	
W7	90x35-MGP10 H0 ADS	JD5	


- 18 more members were not shown -

Vertical Reactions at Supports

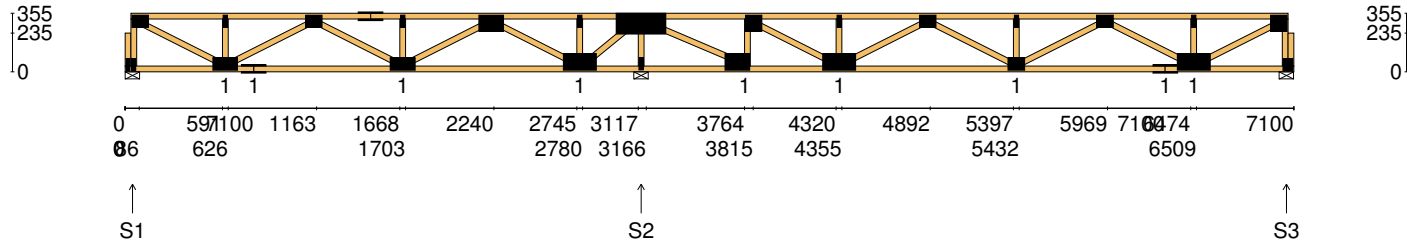
	S1	S2	S3
1.35DL (kN)	0.36	1.44	0.53
1.2DL + 1.5LL (kN)	1.75	7.16	2.60

Joint	Nail Plate	Joint	Nail Plate
BL1-1	25x75-MN	T8	100x200-MN
T1	75x100-MN	B5	25x75-MN
BL1	25x75-MN	B6	100x200-MN
B1	75x150-MN	T9	25x75-MN
T2	25x75-MN	T10	100x150-MN
B2	75x150-MN	B7	100x150-MN
T3	75x100-MN	T11	25x75-MN
T4	75x150-MN	T12	75x100-MN
B3	75x150-MN	B8	75x100-MN
T5	25x75-MN	T13	25x75-MN
T6	75x150-MN	T14	75x100-MN
B4	100x200-MN	B9	75x150-MN
T7	25x75-MN	BR1-1	25x75-MN

- 4 more nail plates were not shown -

Span: 7100	Floor Material: Particle (15.4 kg/m²)	Application: General Areas	All dimensions in millimetres. This drawing should be read in conjunction with Multinail Technical sheets. Wall plates must be placed at supports only.	016020 (TN-016-020)
Overhang: 0/0	Floor Covering: Std Carpet + Underlay (8 kg/m²)	Live Load: 1.5 kPa		Ver: Floor 1.9.4
Spacing: 600	Ceiling Material: Plaster 10mm Supa Span (8.2 kg/m²)	Point Load: 1.8 kN		Date: 14/02/2019
Quantity: 4	Ceiling Fixing: Metal direct @ 600c	Design: AS 1720.1-2010		Page: 2 of 23

Client: D'ANDREA	Trusstech SA Pty Ltd 16 High St., Dry Creek, SA 5094	Job No: TT02363
Site: 50-52 WINDSOR ST MAGILL SA 5072 AUS		Weight: 43.45 kg
Ref: DWLG 4	Joist Name: FJ3 Type: SJ 355 Joists: FJ23	Total Weight: 43.45 kg
		Laminations: 1



TIMBER / PLATES

Member	Size	Plating	Restraint
BC1	90x35-MGP10 H0 ADS	JD5	600
LBlock1	90x35-MGP10 H0 ADS	JD5	
LEW1	90x35-MGP10 H0 ADS	JD5	
TC1	90x35-MGP10 H0 ADS	JD5	300
W1	90x35-MGP10 H0 ADS	JD5	
W2	90x35-MGP10 H0 ADS	JD5	
W3	90x35-MGP10 H0 ADS	JD5	
BC2	90x35-MGP10 H0 ADS	JD5	600
W4	90x35-MGP10 H0 ADS	JD5	
TC2	90x35-MGP10 H0 ADS	JD5	300
W5	90x35-MGP10 H0 ADS	JD5	
W6	90x35-MGP10 H0 ADS	JD5	
W7	90x35-MGP10 H0 ADS	JD5	


- 17 more members were not shown -

Vertical Reactions at Supports

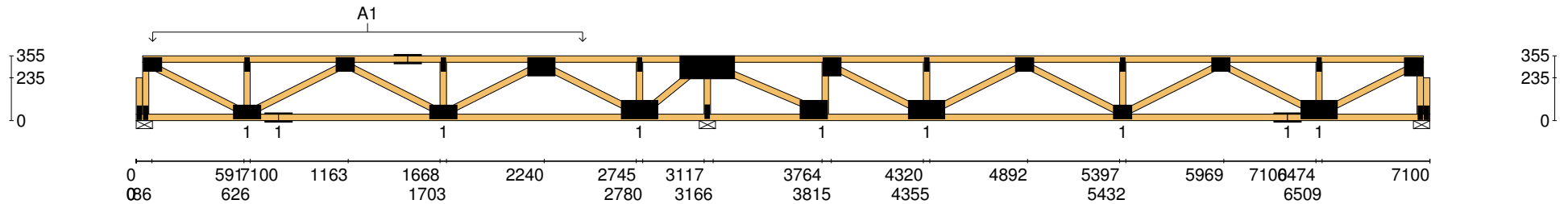
	S1	S2	S3
1.35DL (kN)	0.66	1.70	0.50
1.2DL + 1.5LL (kN)	2.02	7.39	2.57


Joint	Nail Plate	Joint	Nail Plate
BL1-1	25x75-MN	T8	125x300-MN
T1	75x100-MN	B5	25x75-MN
BL1	25x75-MN	B6	100x150-MN
B1	75x150-MN	T9	100x100-MN
T2	25x75-MN	B7	100x200-MN
B2	75x150-MN	T10	25x75-MN
T3	75x100-MN	T11	75x100-MN
T4	75x150-MN	B8	75x100-MN
B3	75x150-MN	T12	25x75-MN
T5	25x75-MN	T13	75x100-MN
T6	100x150-MN	B9	75x150-MN
B4	100x200-MN	B10	100x200-MN
T7	25x75-MN	BR1-1	25x75-MN

- 3 more nail plates were not shown -

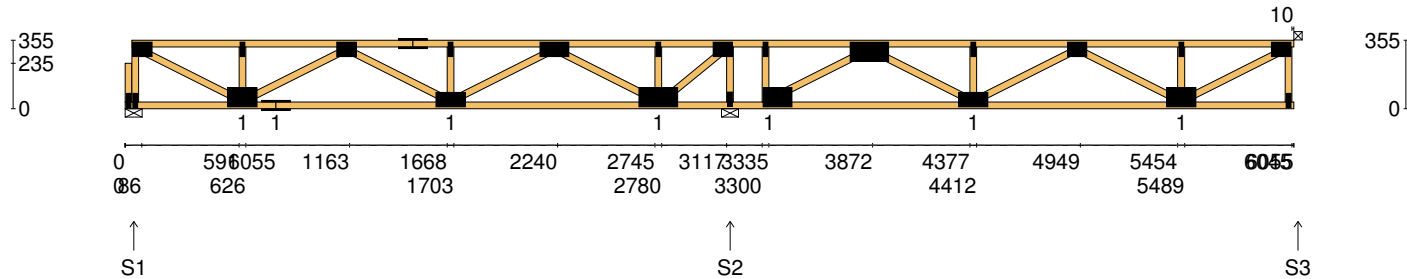
Span: 7100	Floor Material: Particle (15.4 kg/m²)	Application: General Areas	All dimensions in millimetres. This drawing should be read in conjunction with Multinail Technical sheets. Wall plates must be placed at supports only.	016020 (TN-016-020)
Overhang: 0/0	Floor Covering: Std Carpet + Underlay (8 kg/m²)	Live Load: 1.5 kPa		Ver: Floor 1.9.4
Spacing: 600	Ceiling Material: Plaster 10mm Supa Span (8.2 kg/m²)	Point Load: 1.8 kN		Date: 14/02/2019
Quantity: 1	Ceiling Fixing: Metal direct @ 600c	Design: AS 1720.1-2010		Page: 3 of 23

Client: D'ANDREA	Trusstech SA Pty Ltd 16 High St., Dry Creek, SA 5094	Job No: TT02363
Site: 50-52 WINDSOR ST MAGILL SA 5072 AUS		Weight: 43.45 kg
Ref: DWLG 4	Joist Name: FJ3 Type: SJ 355 Joists: FJ23	Total Weight: 43.45 kg
		Laminations: 1



User Def. Load		A1 53.00 kg/m² WET AREA	
Applied Load DL (kN) LL (kN) WL Up (kN) WL Dn (kN)			
Span:	7100	Floor Material:	Particle (15.4 kg/m²)
Overhang:	0/0	Floor Covering:	Std Carpet + Underlay (8 kg/m²)
Spacing:	600	Ceiling Material:	Plaster 10mm Supa Span (8.2 kg/m²)
Quantity:	1	Ceiling Fixing:	Metal direct @ 600c
Application:		General Areas	All dimensions in millimetres. This drawing should be read in conjunction with Multinail Technical sheets. Wall plates must be placed at supports only.
Live Load:		1.5 kPa	
Point Load:		1.8 kN	
Design:		AS 1720.1-2010	
			016020 (TN-016-020)
			Ver: Floor 1.9.4
			Date: 14/02/2019
			Page: 4 of 23

Client: D'ANDREA	Trusstech SA Pty Ltd 16 High St., Dry Creek, SA 5094	Job No: TT02363
Site: 50-52 WINDSOR ST MAGILL SA 5072 AUS		Weight: 36.41 kg
Ref: DWLG 4	Joist Name: FJ4 Type: SJ 355 Joists: FJ24, FJ25	Total Weight: 72.82 kg
		Laminations: 1



TIMBER / PLATES


Member	Size	Plating	Restraint
BC1	90x35-MGP10 H0 ADS	JD5	600
LBlock1	90x35-MGP10 H0 ADS	JD5	
LEW1	90x35-MGP10 H0 ADS	JD5	
TC1	90x35-MGP10 H0 ADS	JD5	300
W1	90x35-MGP10 H0 ADS	JD5	
W2	90x35-MGP10 H0 ADS	JD5	
W3	90x35-MGP10 H0 ADS	JD5	
BC2	90x35-MGP10 H0 ADS	JD5	600
W4	90x35-MGP10 H0 ADS	JD5	
TC2	90x35-MGP10 H0 ADS	JD5	300
W5	90x35-MGP10 H0 ADS	JD5	
W6	90x35-MGP10 H0 ADS	JD5	
W7	90x35-MGP10 H0 ADS	JD5	

- 12 more members were not shown -

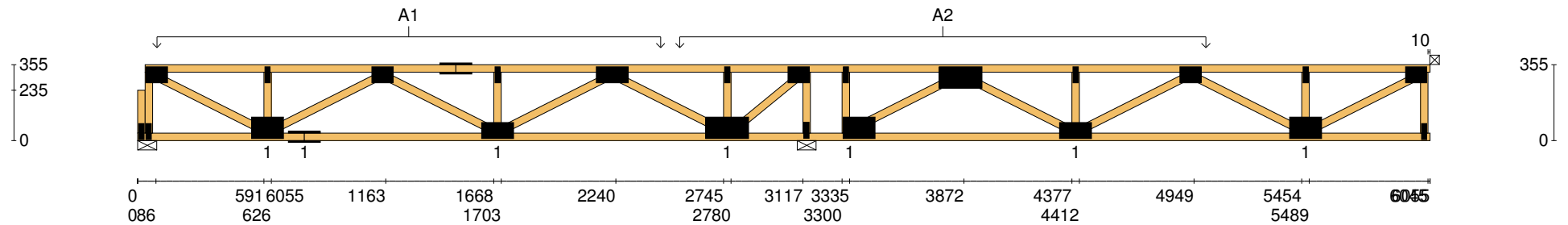
Vertical Reactions at Supports

	S1	S2	S3
1.35DL (kN)	0.71	2.20	0.54
1.2DL + 1.5LL (kN)	2.34	7.37	2.21

Joint	Nail Plate	Joint	Nail Plate
BL1-1	25x75-MN	T8	75x100-MN
T1	75x100-MN	B5	25x75-MN
BL1	25x75-MN	B6	100x150-MN
B1	100x150-MN	T9	25x75-MN
T2	25x75-MN	T10	100x200-MN
B2	75x150-MN	B7	75x150-MN
T3	75x100-MN	T11	25x75-MN
T4	75x150-MN	T12	75x100-MN
B3	75x150-MN	B8	100x150-MN
T5	25x75-MN	T13	25x75-MN
T6	75x150-MN	BR1	25x75-MN
B4	100x200-MN	T14	75x100-MN
T7	25x75-MN		


Span: 6055	Floor Material: Particle (15.4 kg/m²)	Application: General Areas	All dimensions in millimetres. This drawing should be read in conjunction with Multinail Technical sheets. Wall plates must be placed at supports only.	016020 (TN-016-020)
Overhang: 0/0	Floor Covering: Std Carpet + Underlay (8 kg/m²)	Live Load: 1.5 kPa		Ver: Floor 1.9.4
Spacing: 600	Ceiling Material: Plaster 10mm Supa Span (8.2 kg/m²)	Point Load: 1.8 kN		Date: 14/02/2019
Quantity: 2	Ceiling Fixing: Metal direct @ 600c	Design: AS 1720.1-2010		Page: 5 of 23

Client: D'ANDREA	Trusstech SA Pty Ltd 16 High St., Dry Creek, SA 5094	Job No: TT02363
Site: 50-52 WINDSOR ST MAGILL SA 5072 AUS		Weight: 36.41 kg
Ref: DWLG 4	Joist Name: FJ4 Type: SJ 355 Joists: FJ24, FJ25	Total Weight: 72.82 kg
		Laminations: 1

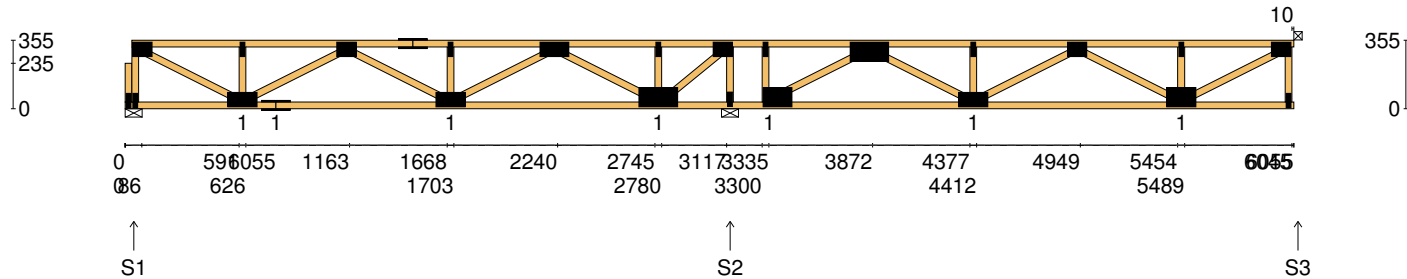


User Def. Load	A1	A2
	53.00 kg/m ²	189.10 kg/m ²
	WET AREA	WET AREA

Applied Load	
DL	(kN)
LL	(kN)
WL Up	(kN)
WL Dn	(kN)

Span:	6055	Floor Material:	Particle (15.4 kg/m²)	Application:	General Areas	All dimensions in millimetres. This drawing should be read in conjunction with Multinail Technical sheets. Wall plates must be placed at supports only.	016020 (TN-016-020)
Overhang:	0/0	Floor Covering:	Std Carpet + Underlay (8 kg/m²)	Live Load:	1.5 kPa		Ver: Floor 1.9.4
Spacing:	600	Ceiling Material:	Plaster 10mm Supa Span (8.2 kg/m²)	Point Load:	1.8 kN		Date: 14/02/2019
Quantity:	2	Ceiling Fixing:	Metal direct @ 600c	Design:	AS 1720.1-2010		Page: 6 of 23

Client: D'ANDREA	Trusstech SA Pty Ltd 16 High St., Dry Creek, SA 5094	Job No: TT02363
Site: 50-52 WINDSOR ST MAGILL SA 5072 AUS		Weight: 36.35 kg
Ref: DWLG 4	Joist Name: FJ5 Type: SJ 355 Joists: FJ26, FJ27	Total Weight: 72.70 kg
		Laminations: 1



TIMBER / PLATES


Member	Size	Plating	Restraint
BC1	90x35-MGP10 H0 ADS	JD5	600
LBlock1	90x35-MGP10 H0 ADS	JD5	
LEW1	90x35-MGP10 H0 ADS	JD5	
TC1	90x35-MGP10 H0 ADS	JD5	300
W1	90x35-MGP10 H0 ADS	JD5	
W2	90x35-MGP10 H0 ADS	JD5	
W3	90x35-MGP10 H0 ADS	JD5	
BC2	90x35-MGP10 H0 ADS	JD5	600
W4	90x35-MGP10 H0 ADS	JD5	
TC2	90x35-MGP10 H0 ADS	JD5	300
W5	90x35-MGP10 H0 ADS	JD5	
W6	90x35-MGP10 H0 ADS	JD5	
W7	90x35-MGP10 H0 ADS	JD5	

- 12 more members were not shown -

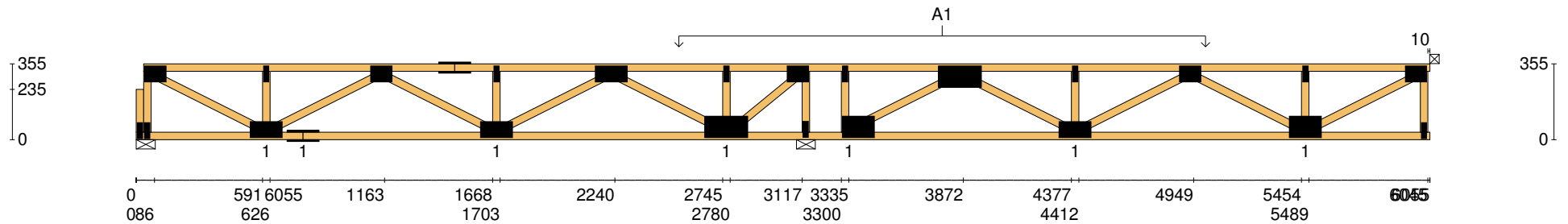
Vertical Reactions at Supports


	S1	S2	S3
1.35DL (kN)	0.41	1.90	0.58
1.2DL + 1.5LL (kN)	2.07	7.11	2.24

Joint	Nail Plate	Joint	Nail Plate
BL1-1	25x75-MN	T8	75x100-MN
T1	75x100-MN	B5	25x75-MN
BL1	25x75-MN	B6	100x150-MN
B1	75x150-MN	T9	25x75-MN
T2	25x75-MN	T10	100x200-MN
B2	75x150-MN	B7	75x150-MN
T3	75x100-MN	T11	25x75-MN
T4	75x150-MN	T12	75x100-MN
B3	75x150-MN	B8	100x150-MN
T5	25x75-MN	T13	25x75-MN
T6	75x150-MN	BR1	25x75-MN
B4	100x200-MN	T14	75x100-MN
T7	25x75-MN		

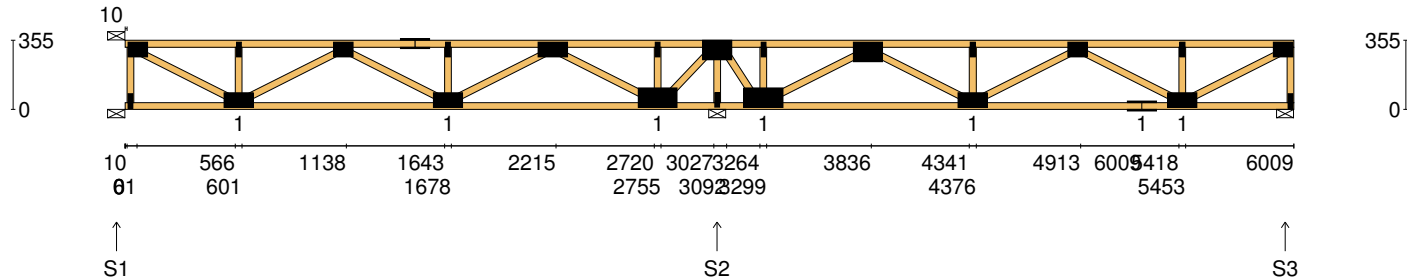
Span: 6055	Floor Material: Particle (15.4 kg/m²)	Application: General Areas	All dimensions in millimetres. This drawing should be read in conjunction with Multinail Technical sheets. Wall plates must be placed at supports only.	016020 (TN-016-020)
Overhang: 0/0	Floor Covering: Std Carpet + Underlay (8 kg/m²)	Live Load: 1.5 kPa		Ver: Floor 1.9.4
Spacing: 600	Ceiling Material: Plaster 10mm Supa Span (8.2 kg/m²)	Point Load: 1.8 kN		Date: 14/02/2019
Quantity: 2	Ceiling Fixing: Metal direct @ 600c	Design: AS 1720.1-2010		Page: 7 of 23

Client: D'ANDREA	Trusstech SA Pty Ltd 16 High St., Dry Creek, SA 5094	Job No: TT02363
Site: 50-52 WINDSOR ST MAGILL SA 5072 AUS		Weight: 36.35 kg
Ref: DWLG 4	Joist Name: FJ5 Type: SJ 355 Joists: FJ26, FJ27	Total Weight: 72.70 kg
		Laminations: 1



User Def. Load		A1 189.10 kg/m ² WET AREA
Applied Load		
DL	(kN)	
LL	(kN)	
WL Up	(kN)	
WL Dn	(kN)	
Span:	6055	Floor Material: Particle (15.4 kg/m²)
Overhang:	0/0	Floor Covering: Std Carpet + Underlay (8 kg/m²)
Spacing:	600	Ceiling Material: Plaster 10mm Supa Span (8.2 kg/m²)
Quantity:	2	Ceiling Fixing: Metal direct @ 600c
Application: General Areas		All dimensions in millimetres. This drawing should be read in conjunction with Multinail Technical sheets. Wall plates must be placed at supports only.
Live Load: 1.5 kPa		
Point Load: 1.8 kN		
Design: AS 1720.1-2010		
		
		016020 (TN-016-020)
		Ver: Floor 1.9.4
		Date: 14/02/2019
		Page: 8 of 23

Client: D'ANDREA	Trusstech SA Pty Ltd 16 High St., Dry Creek, SA 5094	Job No: TT02363
Site: 50-52 WINDSOR ST MAGILL SA 5072 AUS		Weight: 36.40 kg
Ref: DWLG 4	Joist Name: FJ6 Type: SJ 355 Joists: FJ28	Total Weight: 36.40 kg
		Laminations: 1



TIMBER / PLATES


Member	Size	Plating	Restraint
BC1	90x35-MGP10 H0 ADS	JD5	600
TC1	90x35-MGP10 H0 ADS	JD5	300
LEW1	90x35-MGP10 H0 ADS	JD5	
W1	90x35-MGP10 H0 ADS	JD5	
W2	90x35-MGP10 H0 ADS	JD5	
W3	90x35-MGP10 H0 ADS	JD5	
W4	90x35-MGP10 H0 ADS	JD5	
TC2	90x35-MGP10 H0 ADS	JD5	300
W5	90x35-MGP10 H0 ADS	JD5	
W6	90x35-MGP10 H0 ADS	JD5	
W7	90x35-MGP10 H0 ADS	JD5	
W8	90x35-MGP10 H0 ADS	JD5	
W9	90x35-MGP10 H0 ADS	JD5	

- 12 more members were not shown -

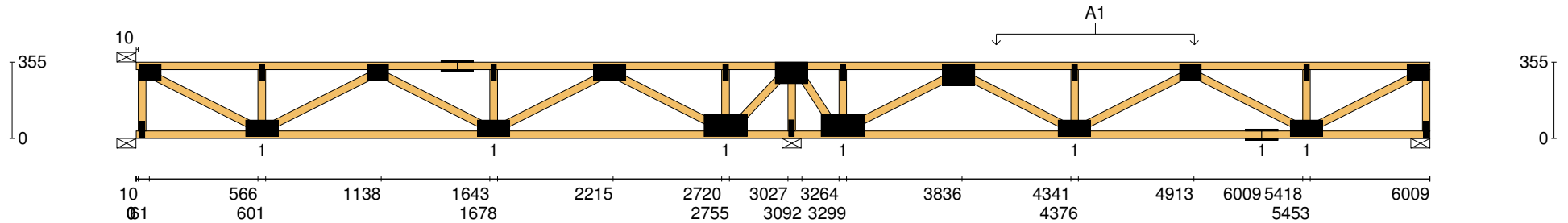
Vertical Reactions at Supports


	S1	S2	S3
1.35DL (kN)	0.36	1.45	0.51
1.2DL + 1.5LL (kN)	1.87	6.44	2.09

Joint	Nail Plate	Joint	Nail Plate
T1	75x100-MN	B5	100x200-MN
BL1	25x75-MN	T9	25x75-MN
B1	75x150-MN	T10	100x150-MN
T2	25x75-MN	B6	75x150-MN
T3	75x100-MN	T11	25x75-MN
T4	75x150-MN	T12	75x100-MN
B2	75x150-MN	B7	75x150-MN
T5	25x75-MN	B8	75x150-MN
T6	75x150-MN	T13	25x75-MN
B3	100x200-MN	BR1	25x75-MN
T7	25x75-MN	T14	75x100-MN
T8	100x150-MN		
B4	25x75-MN		

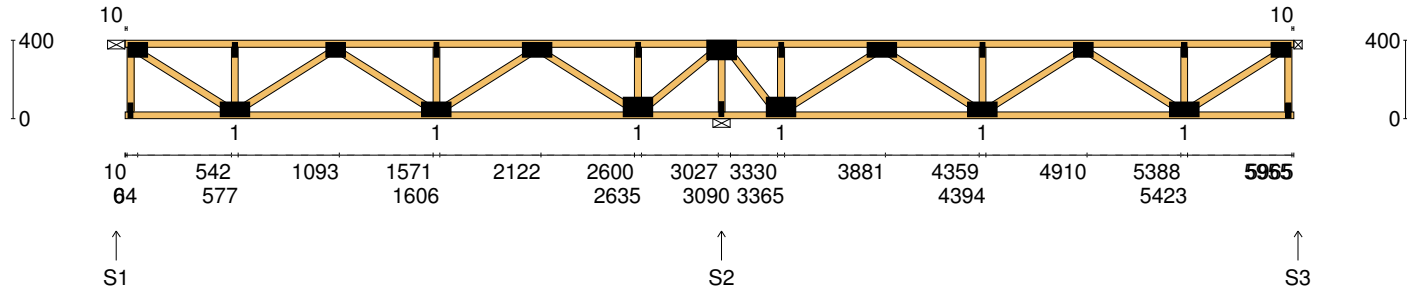
Span: 6009	Floor Material: Particle (15.4 kg/m²)	Application: General Areas	All dimensions in millimetres. This drawing should be read in conjunction with Multinail Technical sheets. Wall plates must be placed at supports only.	016020 (TN-016-020)
Overhang: 0/0	Floor Covering: Std Carpet + Underlay (8 kg/m²)	Live Load: 1.5 kPa		Ver: Floor 1.9.4
Spacing: 600	Ceiling Material: Plaster 10mm Supa Span (8.2 kg/m²)	Point Load: 1.8 kN		Date: 14/02/2019
Quantity: 1	Ceiling Fixing: Metal direct @ 600c	Design: AS 1720.1-2010		Page: 9 of 23

Client: D'ANDREA	Trusstech SA Pty Ltd 16 High St., Dry Creek, SA 5094	Job No: TT02363
Site: 50-52 WINDSOR ST MAGILL SA 5072 AUS		Weight: 36.40 kg
Ref: DWLG 4	Joist Name: FJ6 Type: SJ 355 Joists: FJ28	Total Weight: 36.40 kg
		Laminations: 1



User Def. Load		A1 189.10 kg/m² WET AREA	
Applied Load DL (kN) LL (kN) WL Up (kN) WL Dn (kN)			
Span:	6009	Floor Material:	Particle (15.4 kg/m²)
Overhang:	0/0	Floor Covering:	Std Carpet + Underlay (8 kg/m²)
Spacing:	600	Ceiling Material:	Plaster 10mm Supa Span (8.2 kg/m²)
Quantity:	1	Ceiling Fixing:	Metal direct @ 600c
		Application:	General Areas
		Live Load:	1.5 kPa
		Point Load:	1.8 kN
		Design:	AS 1720.1-2010
All dimensions in millimetres. This drawing should be read in conjunction with Multinail Technical sheets. Wall plates must be placed at supports only.			
			
		016020 (TN-016-020)	
		Ver:	Floor 1.9.4
		Date:	14/02/2019
		Page:	10 of 23

Client: D'ANDREA	Trusstech SA Pty Ltd 16 High St., Dry Creek, SA 5094	Job No: TT02363
Site: 50-52 WINDSOR ST MAGILL SA 5072 AUS		Weight: 36.58 kg
Ref: DWLG 4	Joist Name: FJ7 Type: SJ 400 Joists: FJ29	Total Weight: 36.58 kg
		Laminations: 1



TIMBER / PLATES


Member	Size	Plating	Restraint
BC1	90x35-MGP10 H0 ADS	JD5	600
TC1	90x35-MGP10 H0 ADS	JD5	300
LEW1	90x35-MGP10 H0 ADS	JD5	
W1	90x35-MGP10 H0 ADS	JD5	
W2	90x35-MGP10 H0 ADS	JD5	
W3	90x35-MGP10 H0 ADS	JD5	
W4	90x35-MGP10 H0 ADS	JD5	
W5	90x35-MGP10 H0 ADS	JD5	
W6	90x35-MGP10 H0 ADS	JD5	
W7	90x35-MGP10 H0 ADS	JD5	
W8	90x35-MGP10 H0 ADS	JD5	
W9	90x35-MGP10 H0 ADS	JD5	
W10	90x35-MGP10 H0 ADS	JD5	

- 10 more members were not shown -

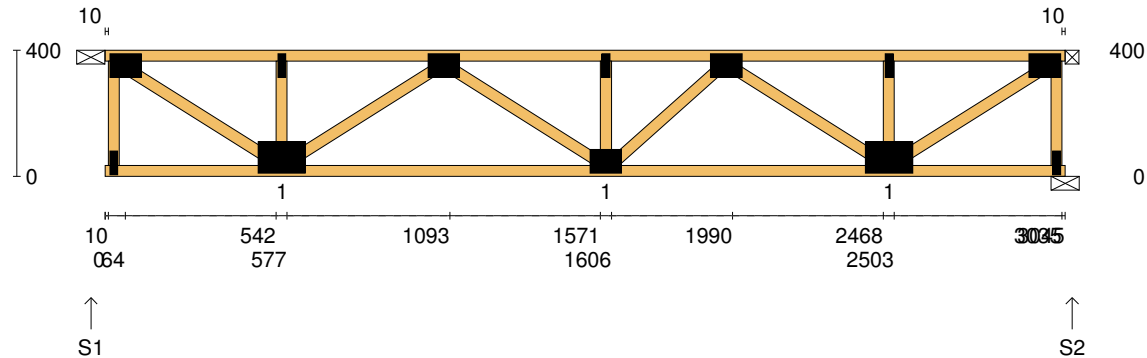
Vertical Reactions at Supports

	S1	S2	S3
1.35DL (kN)	0.39	1.20	0.37
1.2DL + 1.5LL (kN)	1.94	5.96	1.82

Joint	Nail Plate	Joint	Nail Plate
T1	75x100-MN	T8	25x75-MN
BL1	25x75-MN	T9	75x150-MN
B1	75x150-MN	B6	75x150-MN
T2	25x75-MN	T10	25x75-MN
T3	75x100-MN	T11	75x100-MN
B2	75x150-MN	B7	75x150-MN
T4	25x75-MN	T12	25x75-MN
T5	75x150-MN	BR1	25x75-MN
B3	100x150-MN	T13	75x100-MN
T6	25x75-MN		
T7	100x150-MN		
B4	25x75-MN		
B5	100x150-MN		

Span: 5965	Floor Material: Particle (15.4 kg/m²)	Application: General Areas	All dimensions in millimetres. This drawing should be read in conjunction with Multinail Technical sheets. Wall plates must be placed at supports only.	016020 (TN-016-020)
Overhang: 0/0	Floor Covering: Std Carpet + Underlay (8 kg/m²)	Live Load: 1.5 kPa		Ver: Floor 1.9.4
Spacing: 600	Ceiling Material: Plaster 10mm Supa Span (8.2 kg/m²)	Point Load: 1.8 kN		Date: 14/02/2019
Quantity: 1	Ceiling Fixing: Metal direct @ 600c	Design: AS 1720.1-2010		Page: 11 of 23

Client: D'ANDREA	Trusstech SA Pty Ltd 16 High St., Dry Creek, SA 5094	Job No: TT02363
Site: 50-52 WINDSOR ST MAGILL SA 5072 AUS		Weight: 18.75 kg
Ref: DWLG 4	Joist Name: FJ8 Type: SJ 400 Joists: FJ30, FJ31, FJ32, FJ33	Total Weight: 75.00 kg
		Laminations: 1



TIMBER / PLATES


Member	Size	Plating	Restraint
BC1	90x35-MGP10 H0 ADS	JD5	600
TC1	90x35-MGP10 H0 ADS	JD5	300
LEW1	90x35-MGP10 H0 ADS	JD5	
W1	90x35-MGP10 H0 ADS	JD5	
W2	90x35-MGP10 H0 ADS	JD5	
W3	90x35-MGP10 H0 ADS	JD5	
W4	90x35-MGP10 H0 ADS	JD5	
W5	90x35-MGP10 H0 ADS	JD5	
W6	90x35-MGP10 H0 ADS	JD5	
W7	90x35-MGP10 H0 ADS	JD5	
W8	90x35-MGP10 H0 ADS	JD5	
W9	90x35-MGP10 H0 ADS	JD5	
REW1	90x35-MGP10 H0 ADS	JD5	

Vertical Reactions at Supports

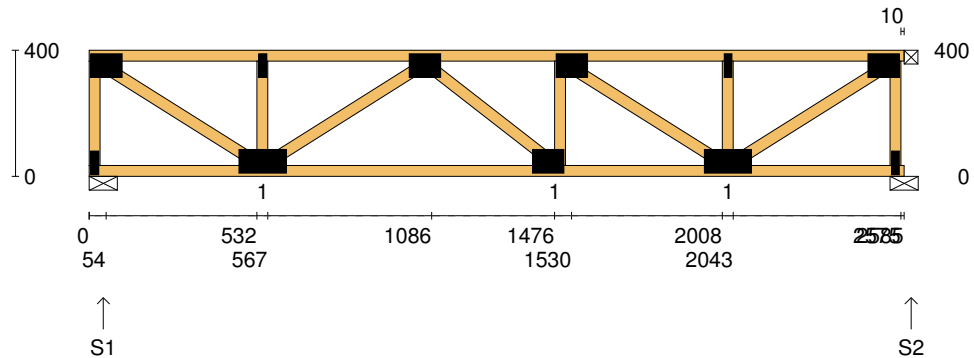
	S1	S2
1.35DL (kN)	0.50	0.50
1.2DL + 1.5LL (kN)	2.46	2.46

Joint Nail Plate

T1	75x100-MN
BL1	25x75-MN
B1	100x150-MN
T2	25x75-MN
T3	75x100-MN
B2	75x100-MN
T4	25x75-MN
T5	75x100-MN
B3	100x150-MN
T6	25x75-MN
BR1	25x75-MN
T7	75x100-MN

Span: 3045	Floor Material: Particle (15.4 kg/m²)	Application: General Areas	All dimensions in millimetres. This drawing should be read in conjunction with Multinail Technical sheets. Wall plates must be placed at supports only.	016020 (TN-016-020)
Overhang: 0/0	Floor Covering: Std Carpet + Underlay (8 kg/m²)	Live Load: 1.5 kPa		Ver: Floor 1.9.4
Spacing: 600	Ceiling Material: Plaster 10mm Supa Span (8.2 kg/m²)	Point Load: 1.8 kN		Date: 14/02/2019
Quantity: 4	Ceiling Fixing: Metal direct @ 600c	Design: AS 1720.1-2010		Page: 12 of 23

Client: D'ANDREA	Trusstech SA Pty Ltd 16 High St., Dry Creek, SA 5094 Joist Name: FJ9 Type: SJ 400 Joists: FJ34	Job No: TT02363
Site: 50-52 WINDSOR ST MAGILL SA 5072 AUS		Weight: 16.31 kg
Ref: DWLG 4		Total Weight: 16.31 kg
		Laminations: 1



TIMBER / PLATES


Member	Size	Plating	Restraint
BC1	90x35-MGP10 H0 ADS	JD5	600
LEW1	90x35-MGP10 H0 ADS	JD5	
TC1	90x35-MGP10 H0 ADS	JD5	300
W1	90x35-MGP10 H0 ADS	JD5	
W2	90x35-MGP10 H0 ADS	JD5	
W3	90x35-MGP10 H0 ADS	JD5	
W4	90x35-MGP10 H0 ADS	JD5	
W5	90x35-MGP10 H0 ADS	JD5	
W6	90x35-MGP10 H0 ADS	JD5	
W7	90x35-MGP10 H0 ADS	JD5	
W8	90x35-MGP10 H0 ADS	JD5	
REW1	90x35-MGP10 H0 ADS	JD5	

Vertical Reactions at Supports

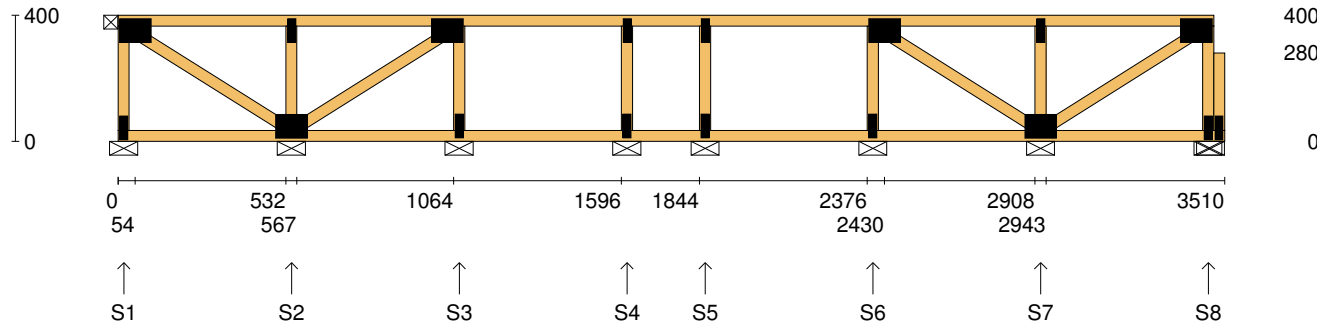
	S1	S2
1.35DL (kN)	0.42	0.43
1.2DL + 1.5LL (kN)	2.09	2.09

Joint Nail Plate

T1	75x100-MN
BL1	25x75-MN
B1	75x150-MN
T2	25x75-MN
T3	75x100-MN
B2	75x100-MN
T4	75x100-MN
B3	75x150-MN
T5	25x75-MN
BR1	25x75-MN
T6	75x100-MN

Span: 2585	Floor Material: Particle (15.4 kg/m²)	Application: General Areas	All dimensions in millimetres. This drawing should be read in conjunction with Multinail Technical sheets. Wall plates must be placed at supports only.	016020 (TN-016-020)
Overhang: 0/0	Floor Covering: Std Carpet + Underlay (8 kg/m²)	Live Load: 1.5 kPa		Ver: Floor 1.9.4
Spacing: 600	Ceiling Material: Plaster 10mm Supa Span (8.2 kg/m²)	Point Load: 1.8 kN		Date: 14/02/2019
Quantity: 1	Ceiling Fixing: Metal direct @ 600c	Design: AS 1720.1-2010		Page: 13 of 23

Client: D'ANDREA	Trusstech SA Pty Ltd 16 High St., Dry Creek, SA 5094 Joist Name: FJ10 Type: SJ 400 Ladder Joists: FJ35	Job No: TT02363
Site: 50-52 WINDSOR ST MAGILL SA 5072 AUS		Weight: 20.32 kg
Ref: DWLG 4		Total Weight: 20.32 kg
		Laminations: 1



TIMBER / PLATES


Member	Size	Plating	Restraint
BC1	90x35-MGP10 H0 ADS	JD5	600
LEW1	90x35-MGP10 H0 ADS	JD5	
TC1	90x35-MGP10 H0 ADS	JD5	300
W1	90x35-MGP10 H0 ADS	JD5	
W2	90x35-MGP10 H0 ADS	JD5	
W3	90x35-MGP10 H0 ADS	JD5	
W4	90x35-MGP10 H0 ADS	JD5	
W5	90x35-MGP10 H0 ADS	JD5	
W6	90x35-MGP10 H0 ADS	JD5	
W7	90x35-MGP10 H0 ADS	JD5	
W8	90x35-MGP10 H0 ADS	JD5	
W9	90x35-MGP10 H0 ADS	JD5	
W10	90x35-MGP10 H0 ADS	JD5	

- 2 more members were not shown -

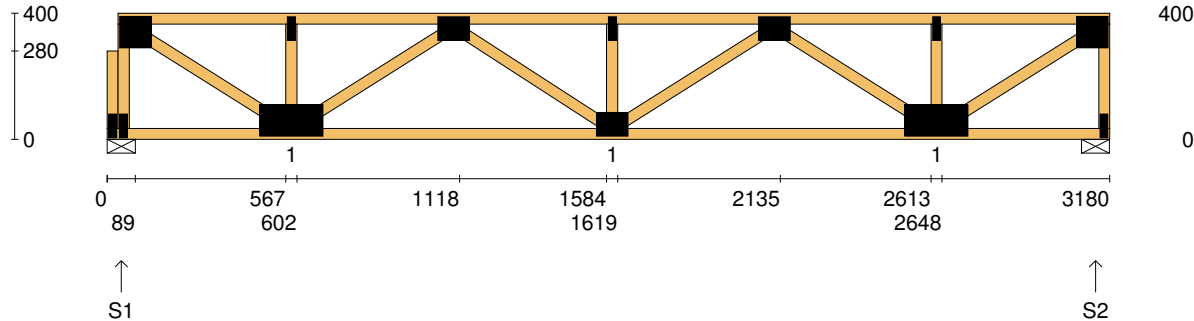
Vertical Reactions at Supports

	S1	S2	S3	S4	S5	S6	S7	S8
1.35DL (kN)	0.07	0.22	0.16	0.12	0.12	0.16	0.22	0.07
1.2DL + 1.5LL (kN)	0.30	1.11	0.80	0.61	0.61	0.80	1.11	0.31

Joint	Nail Plate	Joint	Nail Plate
T1	75x100-MN	T7	25x75-MN
BL1	25x75-MN	BR1	25x75-MN
B1	75x100-MN	T8	75x100-MN
T2	25x75-MN	BR1-1	25x75-MN
T3	75x100-MN		
B2	25x75-MN		
T4	25x75-MN		
B3	25x75-MN		
T5	25x75-MN		
B4	25x75-MN		
T6	75x100-MN		
B5	25x75-MN		
B6	75x100-MN		

Span: 3510	Floor Material: Particle (15.4 kg/m²)	Application: General Areas	All dimensions in millimetres. This drawing should be read in conjunction with Multinail Technical sheets. Wall plates must be placed at supports only.	016020 (TN-016-020)
Overhang: 0/0	Floor Covering: Std Carpet + Underlay (8 kg/m²)	Live Load: 1.5 kPa		Ver: Floor 1.9.4
Spacing: 600	Ceiling Material: Plaster 10mm Supa Span (8.2 kg/m²)	Point Load: 1.8 kN		Date: 14/02/2019
Quantity: 1	Ceiling Fixing: Metal direct @ 600c	Design: AS 1720.1-2010		Page: 14 of 23

Client: D'ANDREA	Trusstech SA Pty Ltd 16 High St., Dry Creek, SA 5094 Joist Name: FJ11 Type: SJ 400 Joists: FJ38	Job No: TT02363
Site: 50-52 WINDSOR ST MAGILL SA 5072 AUS		Weight: 19.92 kg
Ref: DWLG 4		Total Weight: 19.92 kg
		Laminations: 1



TIMBER / PLATES

Member	Size	Plating	Restraint
BC1	90x35-MGP10 H0 ADS	JD5	600
LBlock1	90x35-MGP10 H0 ADS	JD5	
LEW1	90x35-MGP10 H0 ADS	JD5	
TC1	90x35-MGP10 H0 ADS	JD5	300
W1	90x35-MGP10 H0 ADS	JD5	
W2	90x35-MGP10 H0 ADS	JD5	
W3	90x35-MGP10 H0 ADS	JD5	
W4	90x35-MGP10 H0 ADS	JD5	
W5	90x35-MGP10 H0 ADS	JD5	
W6	90x35-MGP10 H0 ADS	JD5	
W7	90x35-MGP10 H0 ADS	JD5	
W8	90x35-MGP10 H0 ADS	JD5	
W9	90x35-MGP10 H0 ADS	JD5	


- 1 more member was not shown -

Vertical Reactions at Supports

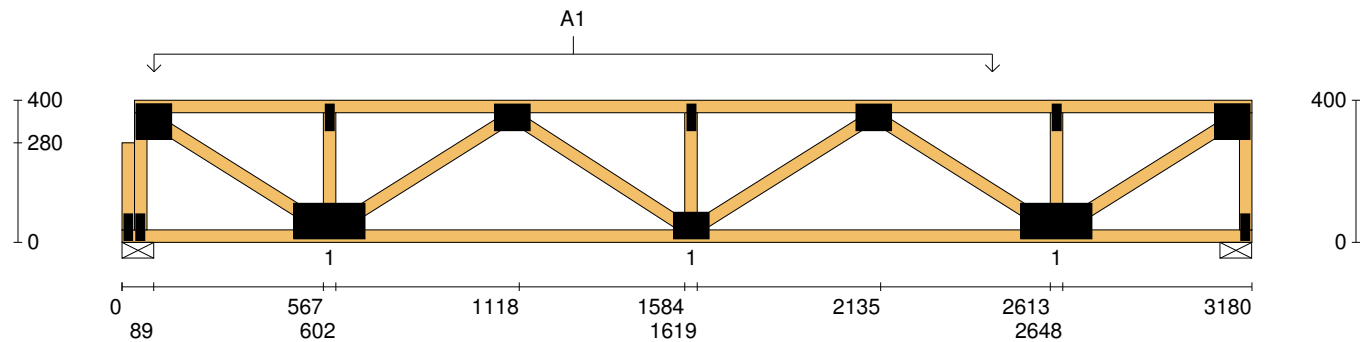
	S1	S2
1.35DL (kN)	0.86	0.73
1.2DL + 1.5LL (kN)	2.86	2.75

Joint Nail Plate

BL1-1	25x75-MN
T1	100x100-MN
BL1	25x75-MN
B1	100x200-MN
T2	25x75-MN
T3	75x100-MN
B2	75x100-MN
T4	25x75-MN
T5	75x100-MN
B3	100x200-MN
T6	25x75-MN
BR1	25x75-MN
T7	100x100-MN


Span: 3180	Floor Material: Particle (15.4 kg/m²)	Application: General Areas	All dimensions in millimetres. This drawing should be read in conjunction with Multinail Technical sheets. Wall plates must be placed at supports only.	016020 (TN-016-020)
Overhang: 0/0	Floor Covering: Std Carpet + Underlay (8 kg/m²)	Live Load: 1.5 kPa		Ver: Floor 1.9.4
Spacing: 600	Ceiling Material: Plaster 10mm Supa Span (8.2 kg/m²)	Point Load: 1.8 kN		Date: 14/02/2019
Quantity: 1	Ceiling Fixing: Metal direct @ 600c	Design: AS 1720.1-2010		Page: 15 of 23

Client: D'ANDREA	Trusstech SA Pty Ltd 16 High St., Dry Creek, SA 5094	Job No: TT02363
Site: 50-52 WINDSOR ST MAGILL SA 5072 AUS		Weight: 19.92 kg
Ref: DWLG 4	Joist Name: FJ11 Type: SJ 400 Joists: FJ38	Total Weight: 19.92 kg
		Laminations: 1

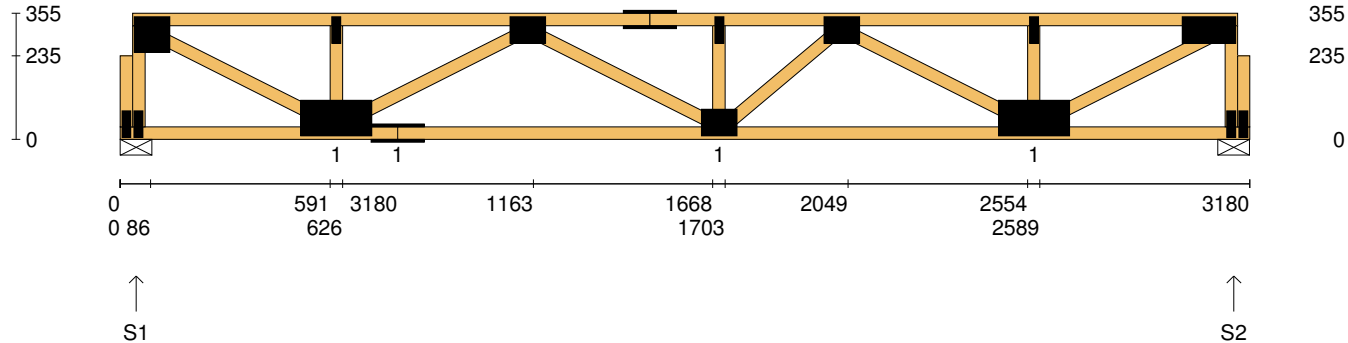


User Def. Load	A1 53.00 kg/m ² WET AREA
-----------------------	-------------------------------------------

Applied Load	
DL (kN)	
LL (kN)	
WL Up (kN)	
WL Dn (kN)	

Span: 3180	Floor Material: Particle (15.4 kg/m²)	Application: General Areas	All dimensions in millimetres. This drawing should be read in conjunction with Multinail Technical sheets. Wall plates must be placed at supports only.	016020 (TN-016-020)
Overhang: 0/0	Floor Covering: Std Carpet + Underlay (8 kg/m²)	Live Load: 1.5 kPa		Ver: Floor 1.9.4
Spacing: 600	Ceiling Material: Plaster 10mm Supa Span (8.2 kg/m²)	Point Load: 1.8 kN		Date: 14/02/2019
Quantity: 1	Ceiling Fixing: Metal direct @ 600c	Design: AS 1720.1-2010		Page: 16 of 23

Client: D'ANDREA	Trusstech SA Pty Ltd 16 High St., Dry Creek, SA 5094	Job No: TT02363
Site: 50-52 WINDSOR ST MAGILL SA 5072 AUS		Weight: 19.98 kg
Ref: DWLG 4	Joist Name: FJ12 Type: SJ 355 Joists: FJ39	Total Weight: 19.98 kg
		Laminations: 1



TIMBER / PLATES


Member	Size	Plating	Restraint
BC1	90x35-MGP10 H0 ADS	JD5	600
LBlock1	90x35-MGP10 H0 ADS	JD5	
LEW1	90x35-MGP10 H0 ADS	JD5	
TC1	90x35-MGP10 H0 ADS	JD5	300
W1	90x35-MGP10 H0 ADS	JD5	
W2	90x35-MGP10 H0 ADS	JD5	
W3	90x35-MGP10 H0 ADS	JD5	
BC2	90x35-MGP10 H0 ADS	JD5	600
W4	90x35-MGP10 H0 ADS	JD5	
TC2	90x35-MGP10 H0 ADS	JD5	300
W5	90x35-MGP10 H0 ADS	JD5	
W6	90x35-MGP10 H0 ADS	JD5	
W7	90x35-MGP10 H0 ADS	JD5	

- 4 more members were not shown -

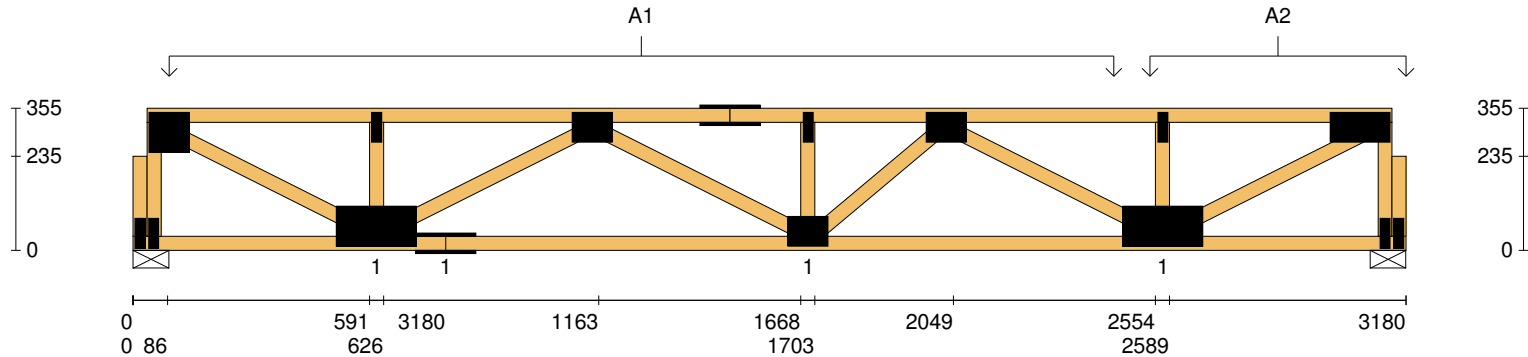
Vertical Reactions at Supports

	S1	S2
1.35DL (kN)	0.87	0.93
1.2DL + 1.5LL (kN)	2.86	3.07

Joint	Nail Plate	Joint	Nail Plate
BL1-1	25x75-MN	BR1	25x75-MN
T1	100x100-MN	T8	75x150-MN
BL1	25x75-MN	BR1-1	25x75-MN
B1	100x200-MN		
T2	25x75-MN		
B2	75x150-MN		
T3	75x100-MN		
T4	75x150-MN		
B3	75x100-MN		
T5	25x75-MN		
T6	75x100-MN		
B4	100x200-MN		
T7	25x75-MN		


Span: 3180	Floor Material: Particle (15.4 kg/m²)	Application: General Areas	All dimensions in millimetres. This drawing should be read in conjunction with Multinail Technical sheets. Wall plates must be placed at supports only.	016020 (TN-016-020)
Overhang: 0/0	Floor Covering: Std Carpet + Underlay (8 kg/m²)	Live Load: 1.5 kPa		Ver: Floor 1.9.4
Spacing: 600	Ceiling Material: Plaster 10mm Supa Span (8.2 kg/m²)	Point Load: 1.8 kN		Date: 14/02/2019
Quantity: 1	Ceiling Fixing: Metal direct @ 600c	Design: AS 1720.1-2010		Page: 17 of 23

Client: D'ANDREA	Trusstech SA Pty Ltd 16 High St., Dry Creek, SA 5094	Job No: TT02363
Site: 50-52 WINDSOR ST MAGILL SA 5072 AUS		Weight: 19.98 kg
Ref: DWLG 4	Joist Name: FJ12 Type: SJ 355 Joists: FJ39	Total Weight: 19.98 kg
		Laminations: 1

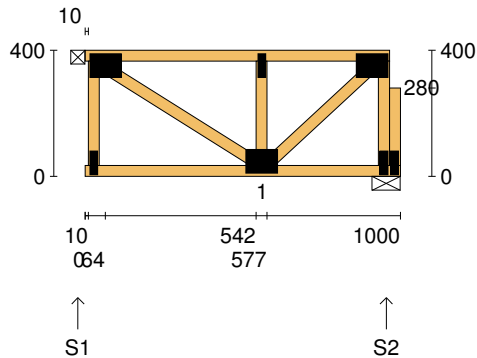


User Def. Load	A1	A2
	53.00 kg/m ²	189.10 kg/m ²
	WET AREA	WET AREA

Applied Load	
DL	(kN)
LL	(kN)
WL Up	(kN)
WL Dn	(kN)

Span:	3180	Floor Material:	Particle (15.4 kg/m²)	Application:	General Areas	All dimensions in millimetres. This drawing should be read in conjunction with Multinail Technical sheets. Wall plates must be placed at supports only.	016020 (TN-016-020)
Overhang:	0/0	Floor Covering:	Std Carpet + Underlay (8 kg/m²)	Live Load:	1.5 kPa		Ver: Floor 1.9.4
Spacing:	600	Ceiling Material:	Plaster 10mm Supa Span (8.2 kg/m²)	Point Load:	1.8 kN		Date: 14/02/2019
Quantity:	1	Ceiling Fixing:	Metal direct @ 600c	Design:	AS 1720.1-2010		Page: 18 of 23

Client: D'ANDREA	Trusstech SA Pty Ltd 16 High St., Dry Creek, SA 5094	Job No: TT02363
Site: 50-52 WINDSOR ST MAGILL SA 5072 AUS		Weight: 7.19 kg
Ref: DWLG 4	Joist Name: FJ13 Type: SJ 400 Joists: FJ40, FJ41	Total Weight: 14.38 kg
		Laminations: 1



TIMBER / PLATES


Member	Size	Plating	Restraint
BC1	90x35-MGP10 H0 ADS	JD5	600
TC1	90x35-MGP10 H0 ADS	JD5	300
LEW1	90x35-MGP10 H0 ADS	JD5	
W1	90x35-MGP10 H0 ADS	JD5	
W2	90x35-MGP10 H0 ADS	JD5	
W3	90x35-MGP10 H0 ADS	JD5	
REW1	90x35-MGP10 H0 ADS	JD5	
RBlock1	90x35-MGP10 H0 ADS	JD5	

Vertical Reactions at Supports

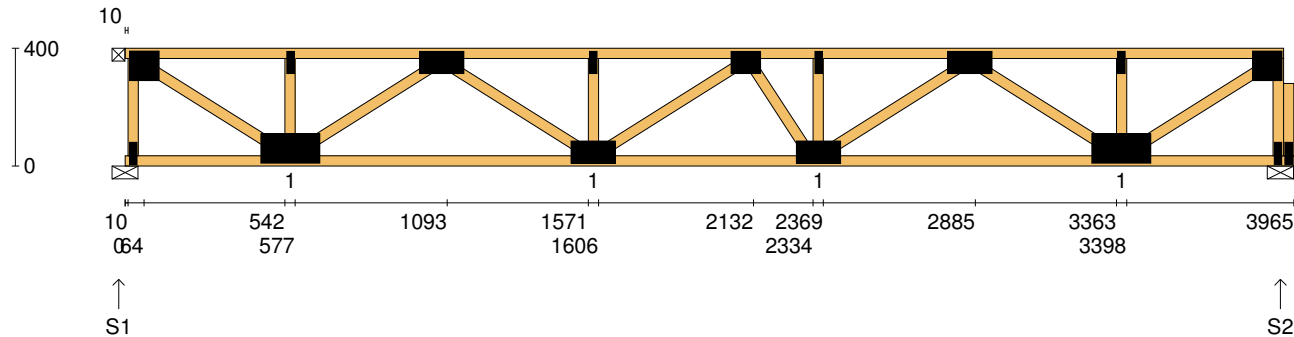
	S1	S2
1.35DL (kN)	0.16	0.16
1.2DL + 1.5LL (kN)	0.76	0.77

Joint Nail Plate

T1	75x100-MN
BL1	25x75-MN
B1	75x100-MN
T2	25x75-MN
BR1	25x75-MN
T3	75x100-MN
BR1-1	25x75-MN

Span: 1000	Floor Material: Particle (15.4 kg/m²)	Application: General Areas	All dimensions in millimetres. This drawing should be read in conjunction with Multinail Technical sheets. Wall plates must be placed at supports only.	016020 (TN-016-020)
Overhang: 0/0	Floor Covering: Std Carpet + Underlay (8 kg/m²)	Live Load: 1.5 kPa		Ver: Floor 1.9.4
Spacing: 600	Ceiling Material: Plaster 10mm Supa Span (8.2 kg/m²)	Point Load: 1.8 kN		Date: 14/02/2019
Quantity: 2	Ceiling Fixing: Metal direct @ 600c	Design: AS 1720.1-2010		Page: 19 of 23

Client: D'ANDREA	Trusstech SA Pty Ltd 16 High St., Dry Creek, SA 5094	Job No: TT02363
Site: 50-52 WINDSOR ST MAGILL SA 5072 AUS		Weight: 24.96 kg
Ref: DWLG 4	Joist Name: FJ14 Type: SJ 400 Joists: FJ42, FJ43	Total Weight: 49.92 kg
		Laminations: 1



TIMBER / PLATES


Member	Size	Plating	Restraint
BC1	90x35-MGP10 H0 ADS	JD5	600
TC1	90x35-MGP10 H0 ADS	JD5	300
LEW1	90x35-MGP10 H0 ADS	JD5	
W1	90x35-MGP10 H0 ADS	JD5	
W2	90x35-MGP10 H0 ADS	JD5	
W3	90x35-MGP10 H0 ADS	JD5	
W4	90x35-MGP10 H0 ADS	JD5	
W5	90x35-MGP10 H0 ADS	JD5	
W6	90x35-MGP10 H0 ADS	JD5	
W7	90x35-MGP10 H0 ADS	JD5	
W8	90x35-MGP10 H0 ADS	JD5	
W9	90x35-MGP10 H0 ADS	JD5	
W10	90x35-MGP10 H0 ADS	JD5	

- 4 more members were not shown -

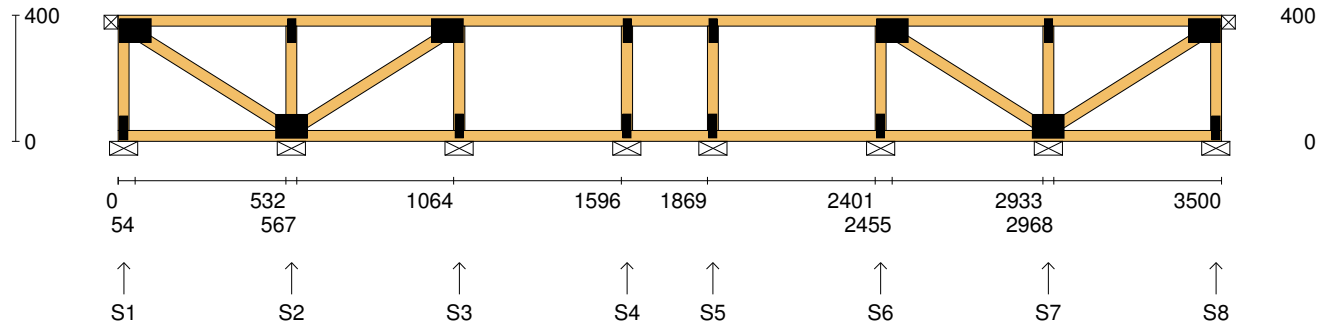
Vertical Reactions at Supports

	S1	S2
1.35DL (kN)	0.65	0.65
1.2DL + 1.5LL (kN)	3.20	3.20

Joint	Nail Plate	Joint	Nail Plate
T1	100x100-MN	BR1	25x75-MN
BL1	25x75-MN	T9	100x100-MN
B1	100x200-MN	BR1-1	25x75-MN
T2	25x75-MN		
T3	75x150-MN		
B2	75x150-MN		
T4	25x75-MN		
T5	75x100-MN		
B3	75x150-MN		
T6	25x75-MN		
T7	75x150-MN		
B4	100x200-MN		
T8	25x75-MN		

Span: 3965	Floor Material: Particle (15.4 kg/m²)	Application: General Areas	All dimensions in millimetres. This drawing should be read in conjunction with Multinail Technical sheets. Wall plates must be placed at supports only.	016020 (TN-016-020)
Overhang: 0/0	Floor Covering: Std Carpet + Underlay (8 kg/m²)	Live Load: 1.5 kPa		Ver: Floor 1.9.4
Spacing: 600	Ceiling Material: Plaster 10mm Supa Span (8.2 kg/m²)	Point Load: 1.8 kN		Date: 14/02/2019
Quantity: 2	Ceiling Fixing: Metal direct @ 600c	Design: AS 1720.1-2010		Page: 20 of 23

Client: D'ANDREA	Trusstech SA Pty Ltd 16 High St., Dry Creek, SA 5094 Joist Name: FJ15 Type: SJ 400 Ladder Joists: FJ45	Job No: TT02363
Site: 50-52 WINDSOR ST MAGILL SA 5072 AUS		Weight: 19.92 kg
Ref: DWLG 4		Total Weight: 19.92 kg Laminations: 1



TIMBER / PLATES


Member	Size	Plating	Restraint
BC1	90x35-MGP10 H0 ADS	JD5	600
LEW1	90x35-MGP10 H0 ADS	JD5	
TC1	90x35-MGP10 H0 ADS	JD5	300
W1	90x35-MGP10 H0 ADS	JD5	
W2	90x35-MGP10 H0 ADS	JD5	
W3	90x35-MGP10 H0 ADS	JD5	
W4	90x35-MGP10 H0 ADS	JD5	
W5	90x35-MGP10 H0 ADS	JD5	
W6	90x35-MGP10 H0 ADS	JD5	
W7	90x35-MGP10 H0 ADS	JD5	
W8	90x35-MGP10 H0 ADS	JD5	
W9	90x35-MGP10 H0 ADS	JD5	
W10	90x35-MGP10 H0 ADS	JD5	

- 1 more member was not shown -

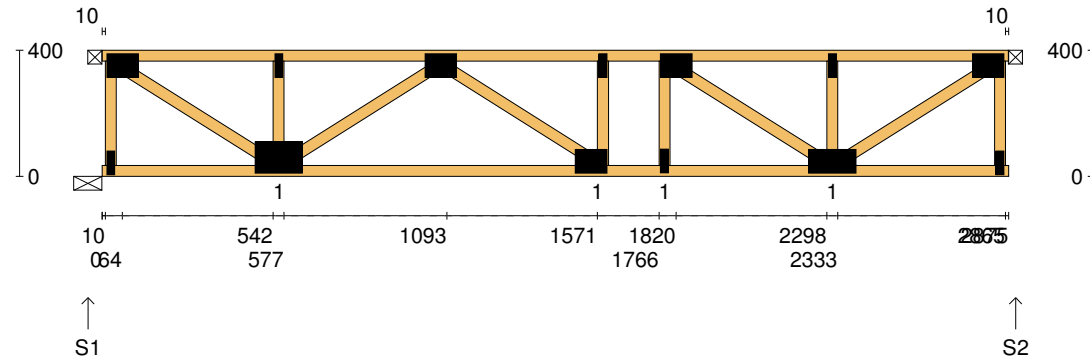
Vertical Reactions at Supports

	S1	S2	S3	S4	S5	S6	S7	S8
1.35DL (kN)	0.07	0.22	0.16	0.12	0.12	0.16	0.22	0.07
1.2DL + 1.5LL (kN)	0.30	1.11	0.80	0.63	0.63	0.80	1.11	0.30

Joint	Nail Plate	Joint	Nail Plate
T1	75x100-MN	T7	25x75-MN
BL1	25x75-MN	BR1	25x75-MN
B1	75x100-MN	T8	75x100-MN
T2	25x75-MN		
T3	75x100-MN		
B2	25x75-MN		
T4	25x75-MN		
B3	25x75-MN		
T5	25x75-MN		
B4	25x75-MN		
T6	75x100-MN		
B5	25x75-MN		
B6	75x100-MN		

Span: 3500	Floor Material: Particle (15.4 kg/m²)	Application: General Areas	All dimensions in millimetres. This drawing should be read in conjunction with Multinail Technical sheets. Wall plates must be placed at supports only.	016020 (TN-016-020)
Overhang: 0/0	Floor Covering: Std Carpet + Underlay (8 kg/m²)	Live Load: 1.5 kPa		Ver: Floor 1.9.4
Spacing: 600	Ceiling Material: Plaster 10mm Supa Span (8.2 kg/m²)	Point Load: 1.8 kN		Date: 14/02/2019
Quantity: 1	Ceiling Fixing: Metal direct @ 600c	Design: AS 1720.1-2010		Page: 21 of 23

Client: D'ANDREA	Trusstech SA Pty Ltd 16 High St., Dry Creek, SA 5094	Job No: TT02363
Site: 50-52 WINDSOR ST MAGILL SA 5072 AUS		Weight: 17.99 kg
Ref: DWLG 4	Joist Name: FJ16 Type: SJ 400 Joists: FJ46, FJ47	Total Weight: 35.98 kg
		Laminations: 1



TIMBER / PLATES


Member	Size	Plating	Restraint
BC1	90x35-MGP10 H0 ADS	JD5	600
TC1	90x35-MGP10 H0 ADS	JD5	300
LEW1	90x35-MGP10 H0 ADS	JD5	
W1	90x35-MGP10 H0 ADS	JD5	
W2	90x35-MGP10 H0 ADS	JD5	
W3	90x35-MGP10 H0 ADS	JD5	
W4	90x35-MGP10 H0 ADS	JD5	
W5	90x35-MGP10 H0 ADS	JD5	
W6	90x35-MGP10 H0 ADS	JD5	
W7	90x35-MGP10 H0 ADS	JD5	
W8	90x35-MGP10 H0 ADS	JD5	
W9	90x35-MGP10 H0 ADS	JD5	
REW1	90x35-MGP10 H0 ADS	JD5	

Vertical Reactions at Supports

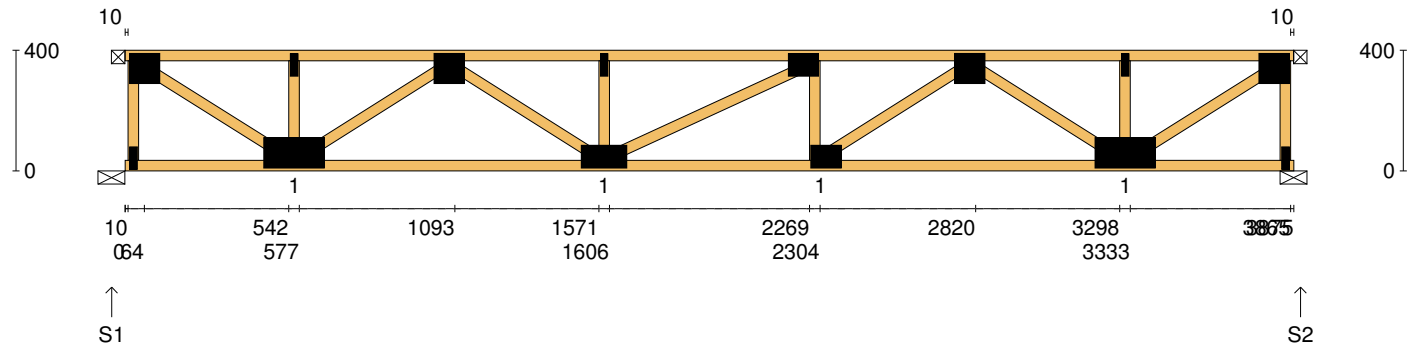
	S1	S2
1.35DL (kN)	0.47	0.47
1.2DL + 1.5LL (kN)	2.32	2.32

Joint Nail Plate

T1	75x100-MN
BL1	25x75-MN
B1	100x150-MN
T2	25x75-MN
T3	75x100-MN
B2	75x100-MN
T4	25x75-MN
T5	75x100-MN
B3	25x75-MN
B4	75x150-MN
T6	25x75-MN
BR1	25x75-MN
T7	75x100-MN

Span: 2875	Floor Material: Particle (15.4 kg/m²)	Application: General Areas	All dimensions in millimetres. This drawing should be read in conjunction with Multinail Technical sheets. Wall plates must be placed at supports only.	016020 (TN-016-020)
Overhang: 0/0	Floor Covering: Std Carpet + Underlay (8 kg/m²)	Live Load: 1.5 kPa		Ver: Floor 1.9.4
Spacing: 600	Ceiling Material: Plaster 10mm Supa Span (8.2 kg/m²)	Point Load: 1.8 kN		Date: 14/02/2019
Quantity: 2	Ceiling Fixing: Metal direct @ 600c	Design: AS 1720.1-2010		Page: 22 of 23

Client: D'ANDREA	Trusstech SA Pty Ltd 16 High St., Dry Creek, SA 5094	Job No: TT02363
Site: 50-52 WINDSOR ST MAGILL SA 5072 AUS		Weight: 23.82 kg
Ref: DWLG 4	Joist Name: FJ17 Type: SJ 400	Total Weight: 47.64 kg
	Joists: FJ48, FJ49	Laminations: 1



TIMBER / PLATES


Member	Size	Plating	Restraint
BC1	90x35-MGP10 H0 ADS	JD5	600
TC1	90x35-MGP10 H0 ADS	JD5	300
LEW1	90x35-MGP10 H0 ADS	JD5	
W1	90x35-MGP10 H0 ADS	JD5	
W2	90x35-MGP10 H0 ADS	JD5	
W3	90x35-MGP10 H0 ADS	JD5	
W4	90x35-MGP10 H0 ADS	JD5	
W5	90x35-MGP10 H0 ADS	JD5	
W6	90x35-MGP10 H0 ADS	JD5	
W7	90x35-MGP10 H0 ADS	JD5	
W8	90x35-MGP10 H0 ADS	JD5	
W9	90x35-MGP10 H0 ADS	JD5	
W10	90x35-MGP10 H0 ADS	JD5	

- 2 more members were not shown -

Vertical Reactions at Supports

	S1	S2
1.35DL (kN)	0.63	0.63
1.2DL + 1.5LL (kN)	3.14	3.14

Joint	Nail Plate	Joint	Nail Plate
T1	100x100-MN	T8	100x100-MN
BL1	25x75-MN		
B1	100x200-MN		
T2	25x75-MN		
T3	100x100-MN		
B2	75x150-MN		
T4	25x75-MN		
T5	75x100-MN		
B3	75x100-MN		
T6	100x100-MN		
B4	100x200-MN		
T7	25x75-MN		
BR1	25x75-MN		

Span: 3875	Floor Material: Particle (15.4 kg/m²)	Application: General Areas	All dimensions in millimetres. This drawing should be read in conjunction with Multinail Technical sheets. Wall plates must be placed at supports only.	016020 (TN-016-020)
Overhang: 0/0	Floor Covering: Std Carpet + Underlay (8 kg/m²)	Live Load: 1.5 kPa		Ver: Floor 1.9.4
Spacing: 600	Ceiling Material: Plaster 10mm Supa Span (8.2 kg/m²)	Point Load: 1.8 kN		Date: 14/02/2019
Quantity: 2	Ceiling Fixing: Metal direct @ 600c	Design: AS 1720.1-2010		Page: 23 of 23